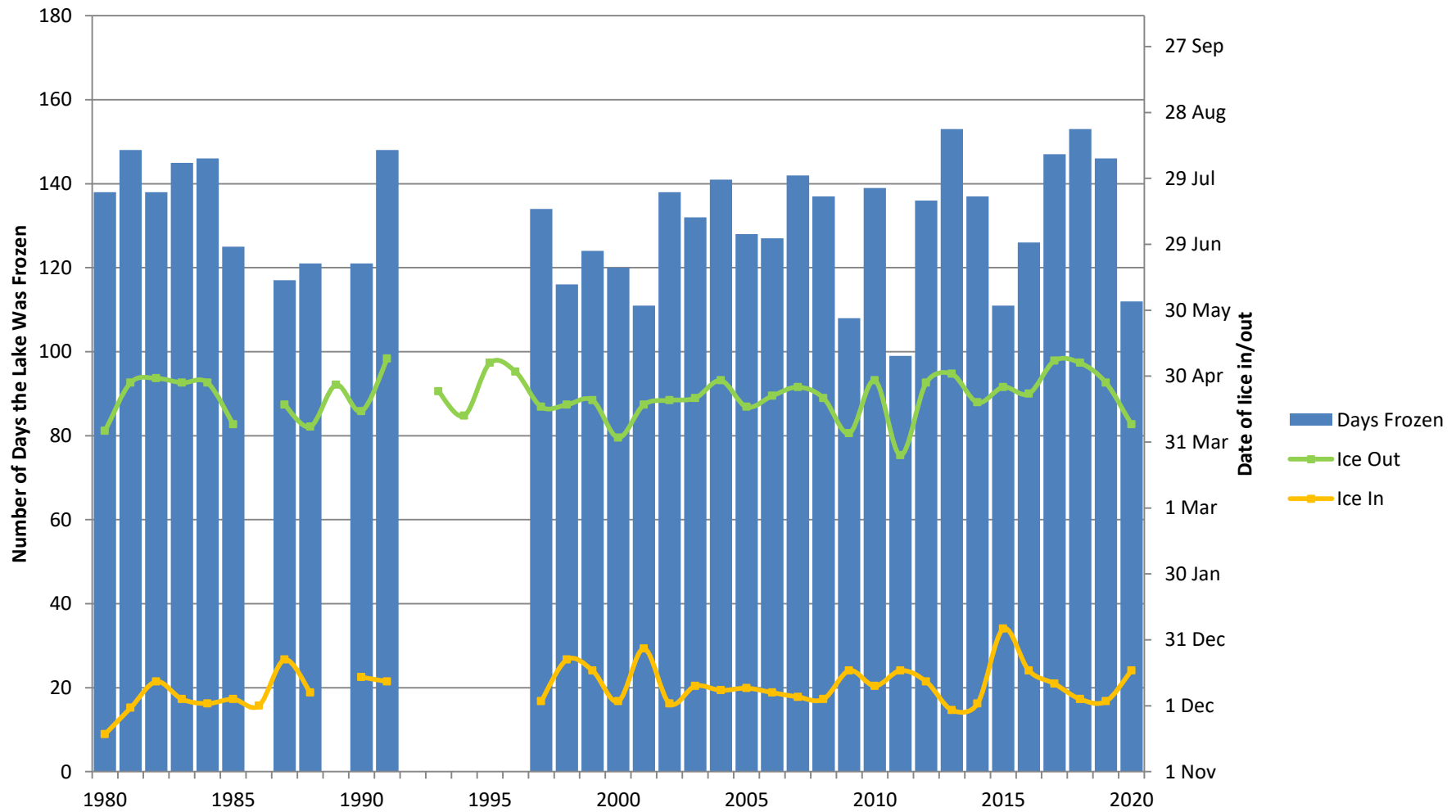


Lake St. Peter Ice Data

Four Decades - from 1980 to 2021



Notes:

1. Data received on 28 June 2015 from Charlie Foster, born 1936, lifelong resident of Lake St. Peter.
2. "Total days frozen" are only plotted where both the "ice in" and "ice out" dates are available.
3. Winter of 2006/07 saw the lake freeze and thaw three times: 7-24 Dec (approx.) 27 Dec-5 Jan, and 10 Jan-21 Apr. This graph shows the first freeze and last thaw.